

what is endometriosis?

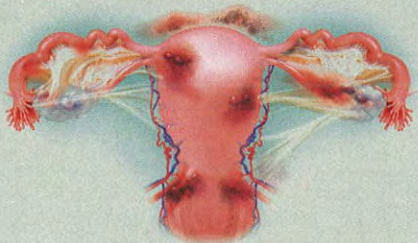
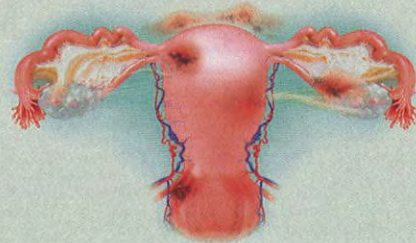
Endometriosis is a condition in which endometrial tissue is found in places other than the lining of the uterus. It may develop on body tissues located anywhere in or outside the pelvic cavity.

STAGES OF ENDOMETRIOSIS

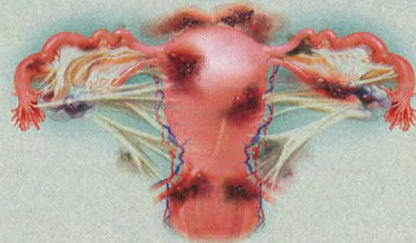
Stage I (minimal)



Stage II (mild)



Stage III (moderate)



Stage IV (severe)

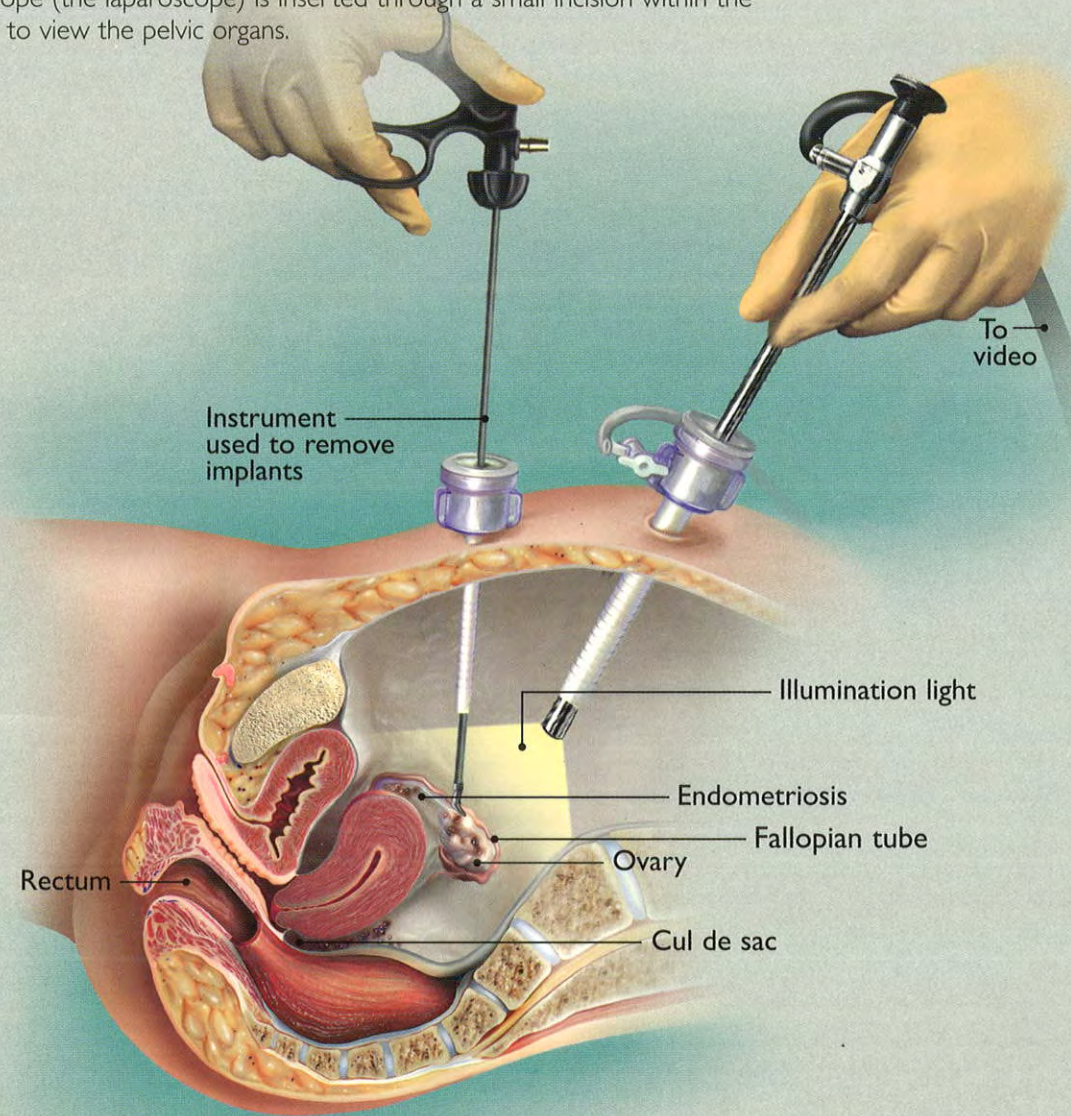
SYMPTOMS

Pelvic pain	Painful periods
Pain with intercourse	Infertility

Adapted from the American Society for Reproductive Medicine (ASRM).

PERFORMING A LAPAROSCOPY

Laparoscopy is a surgical procedure in which a slender, light-transmitting telescope (the laparoscope) is inserted through a small incision within the navel to view the pelvic organs.



For more information, visit
www.asrm.org
www.endometriosisassn.org